

caretiaki

ISSUE 37. 2024 | www.cholmondeley.org.nz



**We need your help
to fill our beds.**

**Give tamariki a safe
place to dream.**



Hear from the people we
have helped

What we've been up to



Cholmondeley
whakanuia a tatou tamariki value our children



Letter from our General Manager

Kia ora,

We've had a busy start to the year at Cholmondeley with the centre reopening to provide respite care from the first week of January, our 99th birthday celebration, the delivery of our annual Sailing Regatta, and our involvement in Les Mills City2Surf as its charity of choice.

When the February Port Hills fires began Cholmondeley decided to safely self-evacuate and close the centre for two days as a precautionary measure. While Cholmondeley was not directly threatened by the fire, the reassurance and safety of its tamariki, kaimahi, and volunteers is always of the utmost importance.

We start the year with a few changes to our Board of Governance. Mihi to Janine Morrell-Gunn for her exceptional commitment serving as Board Chair, she has lifted the leadership and vision of our governance with a best practice lens. Thank you also to Board Member Darel Hall for his valuable contribution over the years. With the departure of

some members, we open the door to welcome new faces. Congratulations to Nettles Lamont for stepping up as Chair, and a warm welcome to Jarrod Gilbert and Claire Sparks as Members of the Board.

We have several Canterbury businesses putting their hands up to help us with much-needed items around the centre. Long-time supporter Blogg Charitable Trust and friends kindly donated 23 brand new Sleepyhead beds, replacing our wooden beds which were no longer fit for purpose. Oakridge Homes also generously donated a new 2020 Toyota Hiace van for us to use to transport tamariki to and from the centre.

As adults, we are responsible for ensuring sure every child in our country has opportunities, the right support, and is well looked after and cared for. I know that here at Cholmondeley we are making a difference. Our corporate supporters believe in our vision and fully support our kaupapa, they have a strong community sense in making sure tamariki have opportunities.



Donations like these from local Canterbury organisations are crucial for Cholmondeley to continue providing the best respite care possible for our tamariki when they need us.

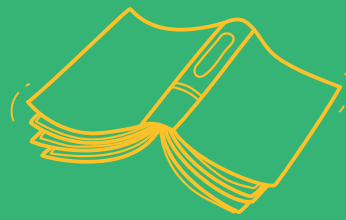
Although we have 23 new beds, we still face the challenge of raising enough money to fund the resources to help fill them. Every empty bed is a missed opportunity to support a child in need. We need your support to fill these beds and give tamariki a safe place to sleep.

We know times are tough out there with businesses and individuals feeling the pressure of a struggling economy, but if you do have a little extra and would like to support what we do here at Cholmondeley, it will help our whānau have a better start to the year.

Keep well as we head into the colder months and keep looking out for your friends and whānau.

Ngā mihi nui,

Toni Tinirau
General Manager,
Cholmondeley Children's Centre



Fay and Vanessa's story

When Fay Kay first heard about Cholmondeley Children's Centre at a grandparent's meeting, she hoped it would be the right fit for her granddaughter Vanessa.

12-year-old Vanessa has lived full-time with her grandparents since she was six months old, and has been coming to Cholmondeley for the past year.

Fay loved how the centre supported Vanessa, "Cholmondeley has been brilliant for her, they include her like one big family and a community that's safe and sound," she said.

She said her granddaughter is given endless opportunities at Cholmondeley, "making friends, laughter, games and being taught different things that we would probably never have done."

Vanessa is nearing the end of her time at Cholmondeley as tamariki age out at 12 years old, and Fay said her only regret is her granddaughter could not stay for longer.

"She just loves it, it just fills up her little cup while she's away [at Cholmondeley] and she comes back with a full cup," Fay said.

She said anyone who thought they could use extra support should "give Cholmondeley a call and have a good chat [because] your child will be happy and safe."



THANKS TO YOUR DONATION
Your donations help us make a difference in the lives of whānau like Fay and Vanessa.
THANKS TO YOUR DONATION

Our Events



Les Mills City2Surf

Thanks to the generosity of the Canterbury community Cholmondeley raised more than \$11,000 for the centre through this year's Les Mills City2Surf.

Our team had a great day out but couldn't have done it without the support of the community.

"At Cholmondeley we are always looking for ways to improve wellbeing, so being selected as the charity of choice for City2Surf has been a great opportunity," said Toni Tinirau, Cholmondeley Children's Centre General Manager.

Thank you to our supporters for being part of Cholmondeley's City2Surf fundraiser this year.

Past events



John Jones Steel Sailing Regatta- 28th March 2024

Our annual Sailing Regatta is a great opportunity to host clients or bond with a team of colleagues, whether you're a seasoned sailor or have never been on a yacht before.

Set in the picturesque Lyttelton Harbour the regatta guarantees a stunning day out on the water.

Cholmondeley and Naval Point Club provide an experienced skipper and crew for teams to have the best experience possible.

This year's event is sold out but you can get in touch to register your interest for next year.

Upcoming events*



ILAM Toyota Little Gems Party 2024- June 15th 2024

ILAM Toyota Little Gems Party is Cholmondeley's biggest fundraising event.

Hosting more than 200 guests in Christ's College Hall, the party features a live covers band, open bar, and rolling canapés catered by Moveable Feasts.

Before the dancing begins, there is a live auction selling unique items and experiences to the highest bidders.

The Little Gems Tree adorned with mystery prizes always proves popular, with guests entering for a chance to win.



2degrees Fit for a Cause- August 16th- 17th 2024

Sponsored by 2degrees and hosted by Les Mills Christchurch, 'Fit for a Cause' combines fitness and community spirit to raise money for Cholmondeley Children's Centre.

Competing teams will crowd-fund for Cholmondeley in the lead up to the event, and then face off to clock up as many kilometres as they can over 24 hours.

Are you up for the challenge?



MAKING PASTA FROM SCRATCH!

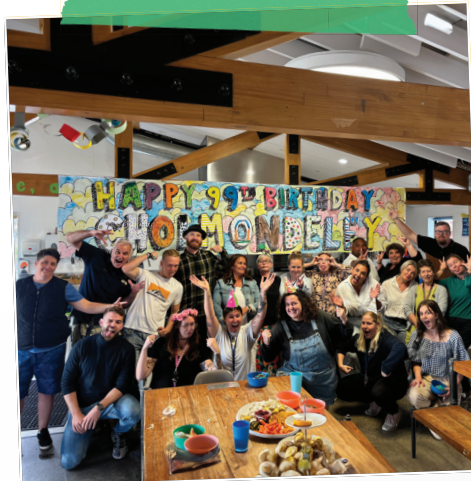


SOME OF THE LOVELY PRESENTS DONATED OVER CHRISTMAS



THANKS TO OAKRIDGE HOMES FOR OUR AWESOME NEW VAN!

What we've been up to



HAPPY 99TH BIRTHDAY CHOLMONDELEY



SERVING SAUSAGES AND SMILES AT CITY2SURF



CHRISTCHURCH SYMPHONY ORCHESTRA STRING INSTRUMENTS WORKSHOP



CROWNTASTIC EVENTS FACE PAINTING AT CHOLMONDELEY'S BIRTHDAY PARTY

Thank You to our supporters

Cause-related giving



CORPORATE SPONSORS

Te Maunga



Dr. Jesse Kenton-Smith
plastic and reconstructive surgeon

Te Moana



Dublin Street
Charitable Trust

STRATEGIC FUNDERS



Trusts and Grants

Advance Ashburton, AD Hally Community Trust, Aotearoa Gaming Trust, Belfast Community Trust, Blogg Charitable Trust, Catalytic Foundation, Christchurch Casino Charitable Trust, Christchurch City Council Strengthening Communities Fund, EB Milton Charitable Trust, Elizabeth Ball Charitable Trust, Farina Thompson Charitable Trust, Joh Ilott Charitable Trust, Jones Foundation, JP Cooper Charitable Trust, K A Boyd Estate, Kiwi Gaming Foundation, Lindsay Foundation, Lion Foundation, Little Company of Mary, Mackenzie Charitable Foundation, Mainland Foundation, Maurice Carter Charitable Trust, New Zealand Charitable Foundation, New Zealand Community Trust, One Foundation, Pamela Webb Charitable Trust, Pub Charity, Rātā Foundation, Robert and Barbara Stewart Charitable Trust, Selwyn District Council, Sheelagh Thompson Sub-Trust, Sport Canterbury, Sutherland Self Help Trust, The Lady Tait Charitable Trust, The Molly Fulton Family Trust, The Trust Community Foundation, The Trustees Executors, Twiggers Estate, William Toomey Charitable Trust

THIS MAGAZINE WAS PROUDLY SPONSORED BY PRINTERS INC.

**we
print
every
thinc.**

print • design • signage
merchandise • apparel

03 365 4597

Printersinc.co.nz

The supplier of our magazine stock follows the strictest, global and environmental, paper sustainability standards.

Donate

If you'd like to make a donation to Cholmondeley, head to our website. We appreciate your support!

cholmondeley.org.nz/donate



Cholmondeley
whakarua a tatou tamarii value our children

Contact us

Toni Tinirau
General Manager
toni@cholmondeley.org.nz
021 459 564

Regan Hines
Fundraising Manager
regan@cholmondeley.org.nz
027 447 3024

Lisa Hurry
Practice Manager
LisaH@cholmondeley.org.nz
021 226 2404

Katie McCullough
Operations Manager
katie@cholmondeley.org.nz
027 699 0172

General Enquiries
03 329 9832
PO Box 12276, Beckenham,
Christchurch 8242
info@cholmondeley.org.nz
www.cholmondeley.org.nz

